

## 2.5m Weather Station Bracket Installation Instructions

**Hunan Coda Electronic Tech Co., Ltd**

Tel: +86-731-85117089

E\_mail: [molly@codasensor.com](mailto:molly@codasensor.com)

Website: [www.codasensor.com](http://www.codasensor.com)

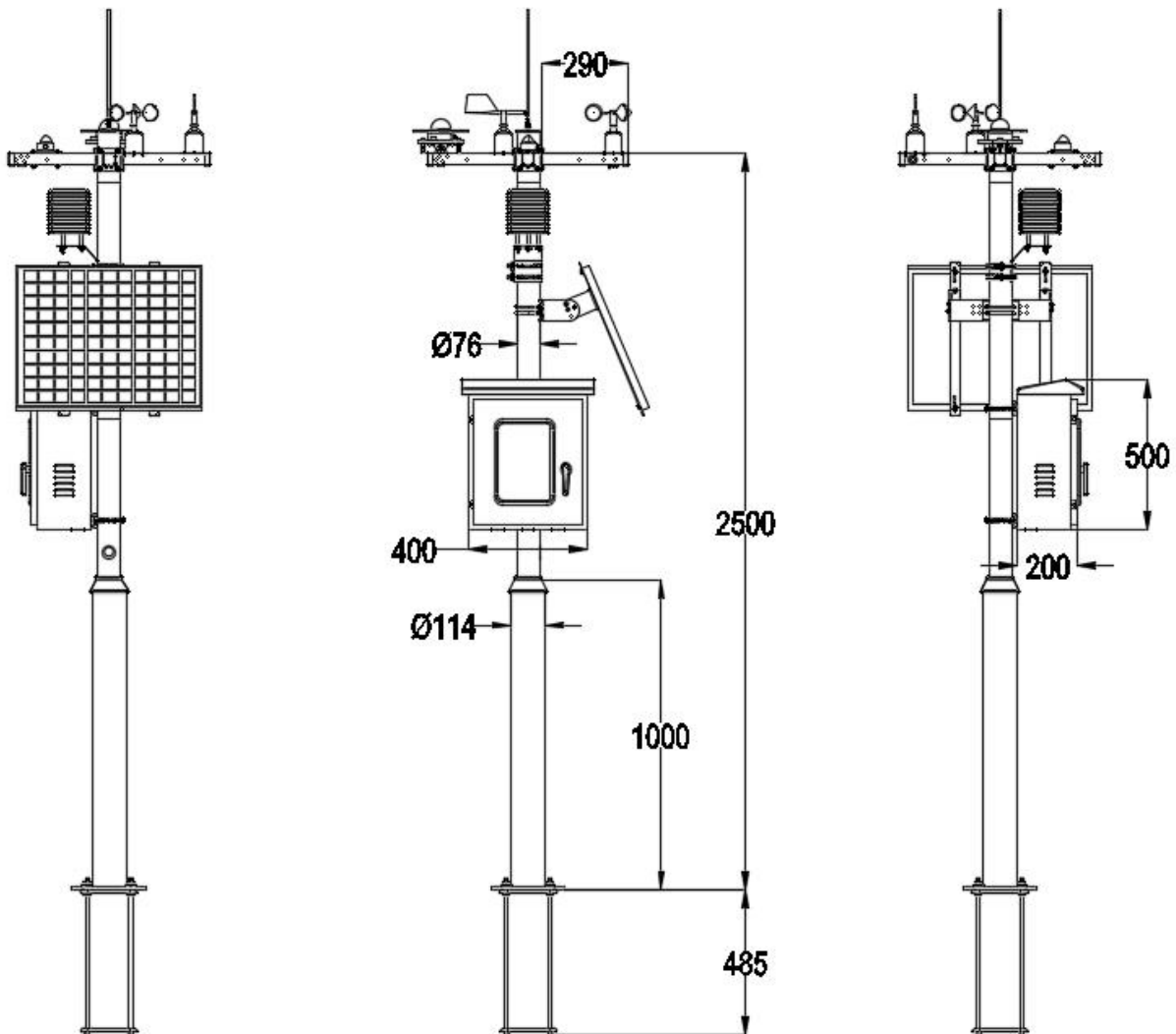
## 1 Bracket description

This manual is suitable for installation of 2.5m bracket in CODA weather station, The hole position of the cross arm of the bracket and the specific bracket are only suitable for the installation of CODA sensors. If you need to install sensors from other companies, you need to design the hole positions yourself.

This manual lists wind speed, wind direction, radiation sensors, shutters, and solar mounts. If you purchase additional sensors, additional installation steps are required.

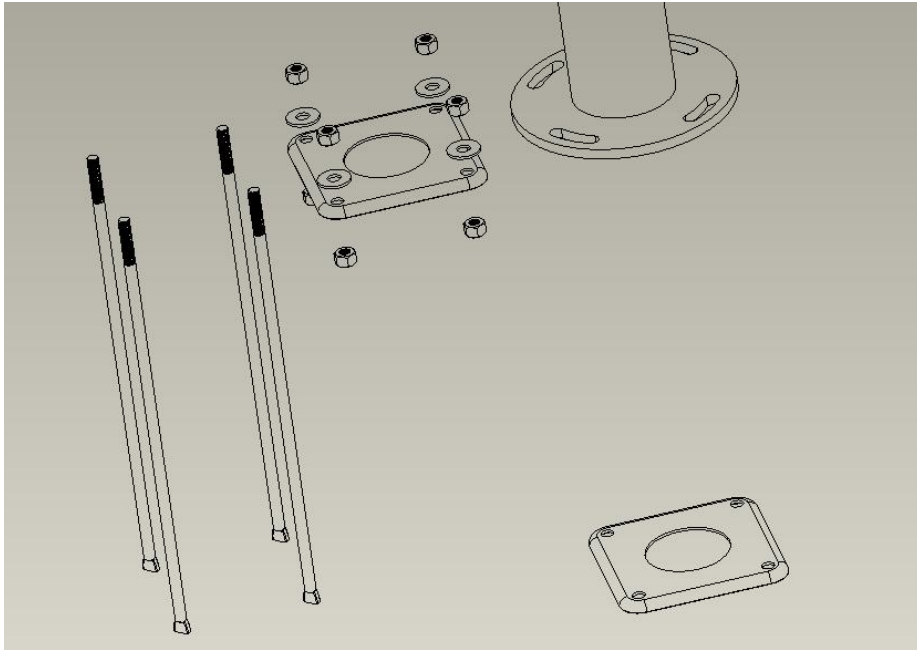
The height of the bracket can be selected from 2.5m, 3m, 3.5m, 5.5m, the installation method is the same, but the height of the bracket rod is different.

## 2 Dimensions(Unit mm).



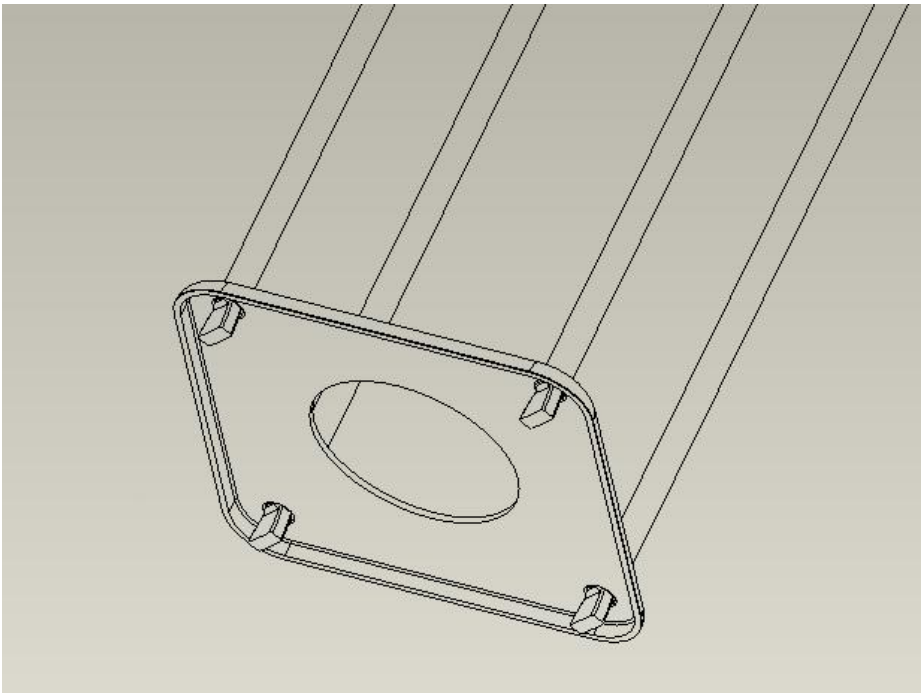
### 3 Bracket installation steps.

#### 3.1 Ground cage installation.

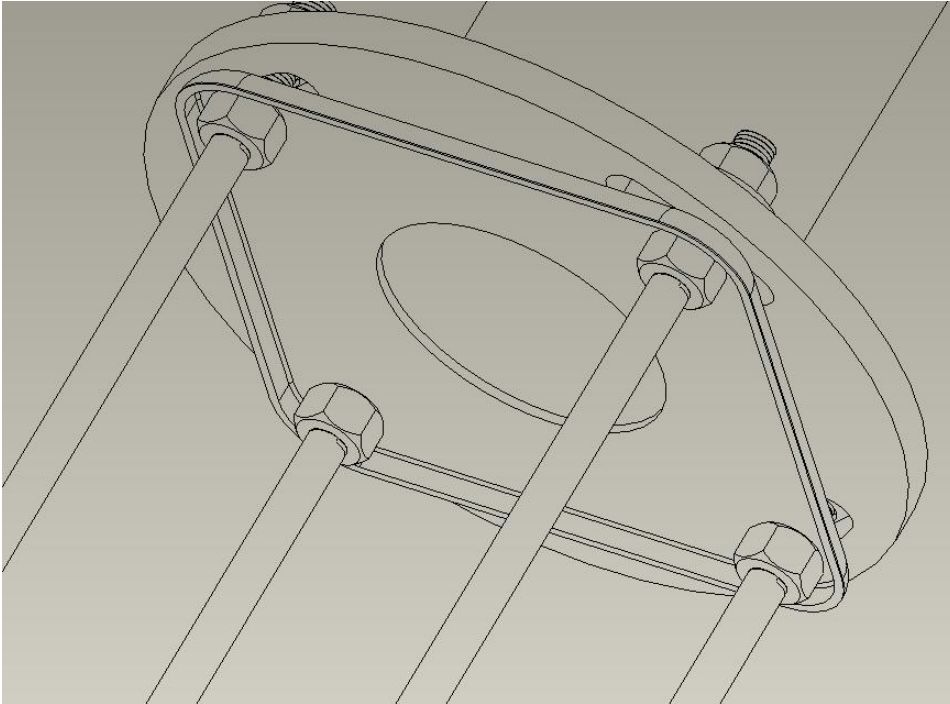


step 1.Dig a groove in the ground in the direction of 400\*400\*450 in length, width and height.

step 2.Insert the four bottom rods into the panel one by one according to the upper direction of the figure, as shown in the figure.



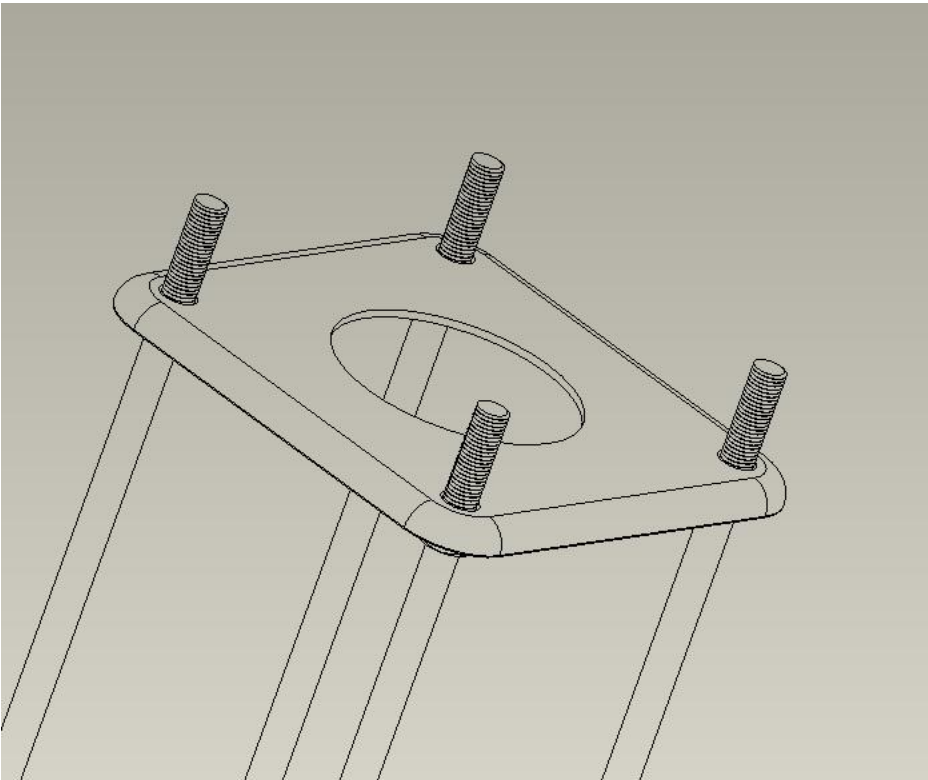
**step 3.M12 nut shown at the bottom rod thread \*4,Then align the other base plate with the hole and insert it.**



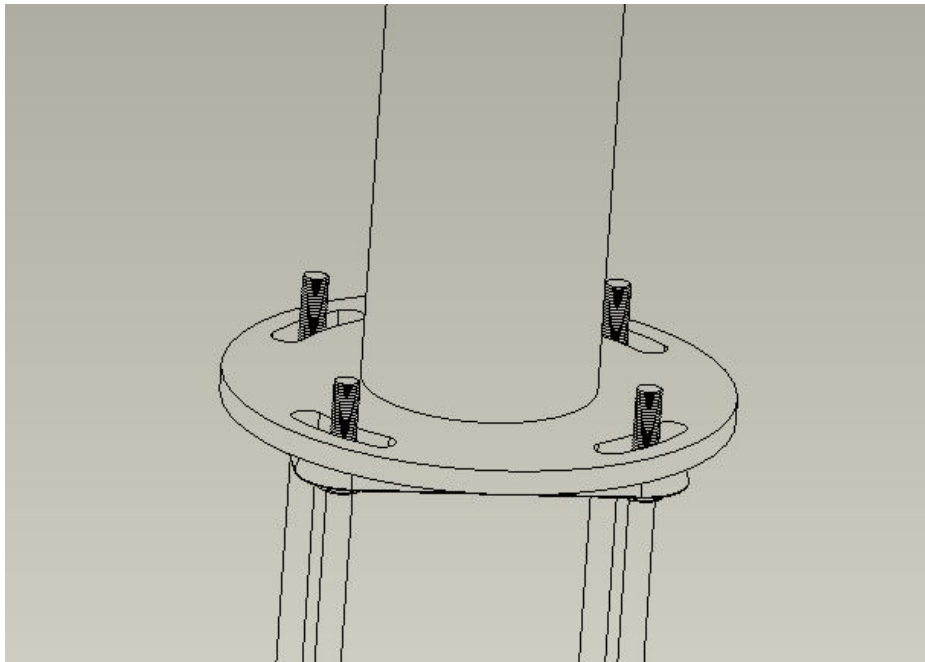
**3.2 Install the upper pole to the base plate.**

**step 1.Put the ground cage into the center of the groove, after positioning it, you can pour cement to let it solidify.**

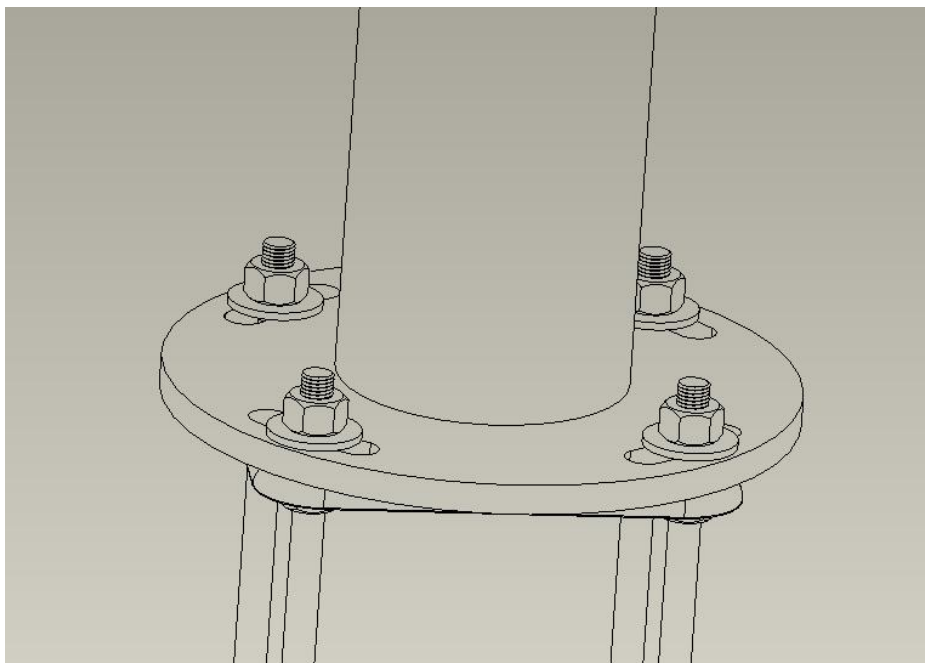
**step 2.After waiting for the cement to solidify, install the upper cover, as shown in the photo.**



**step 3.**Align the lower main pole with the hole for installation, and ensure that the installation position is level with the ground.

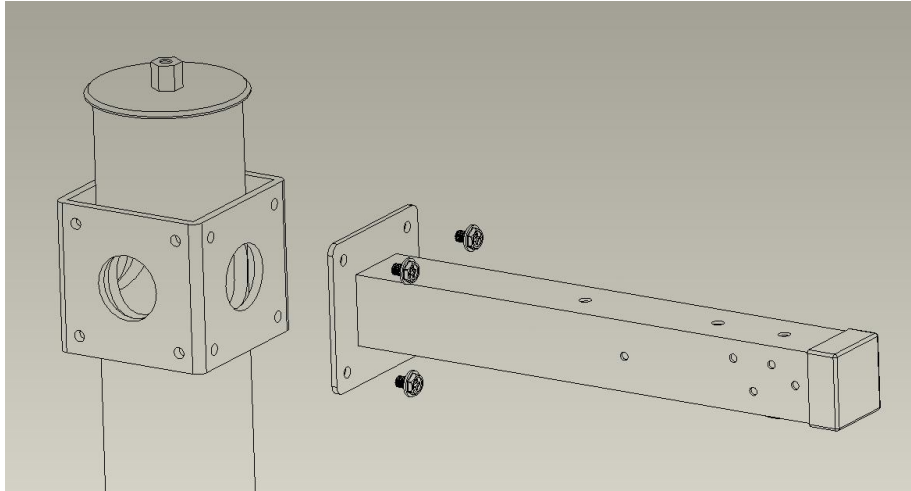


**step 4.**Take out the M12\*4 washer and M12 nut\*4, the installation position is as shown in the photo, lock the nut.

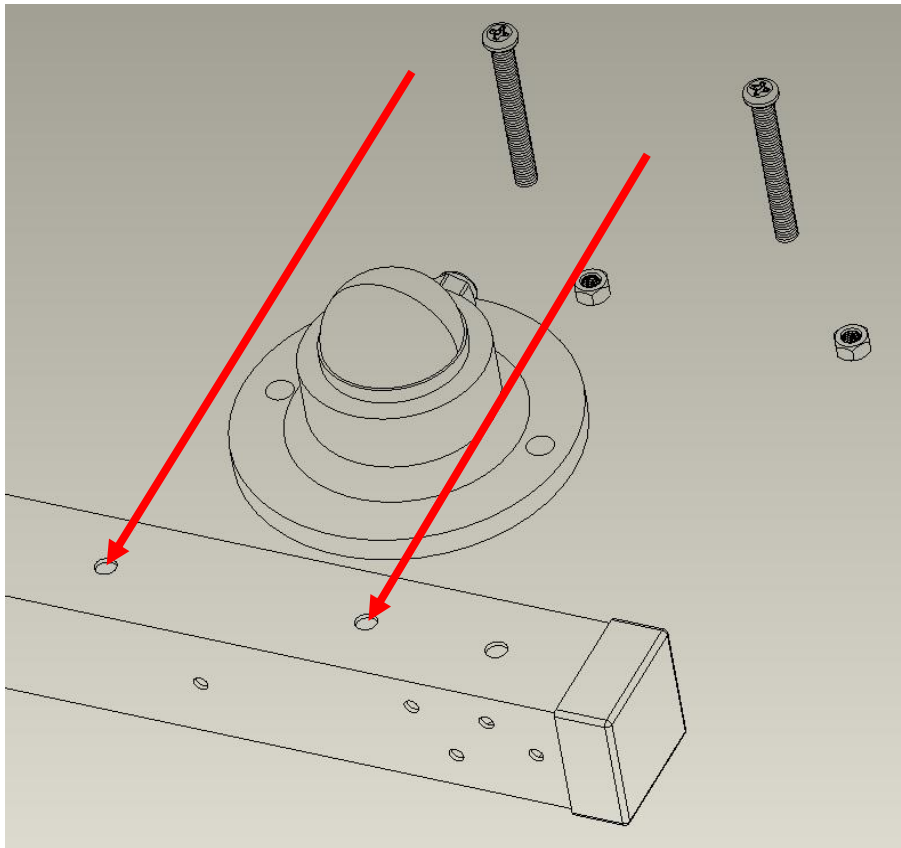


### 3.3 Install the cross arm to the upper main pole.

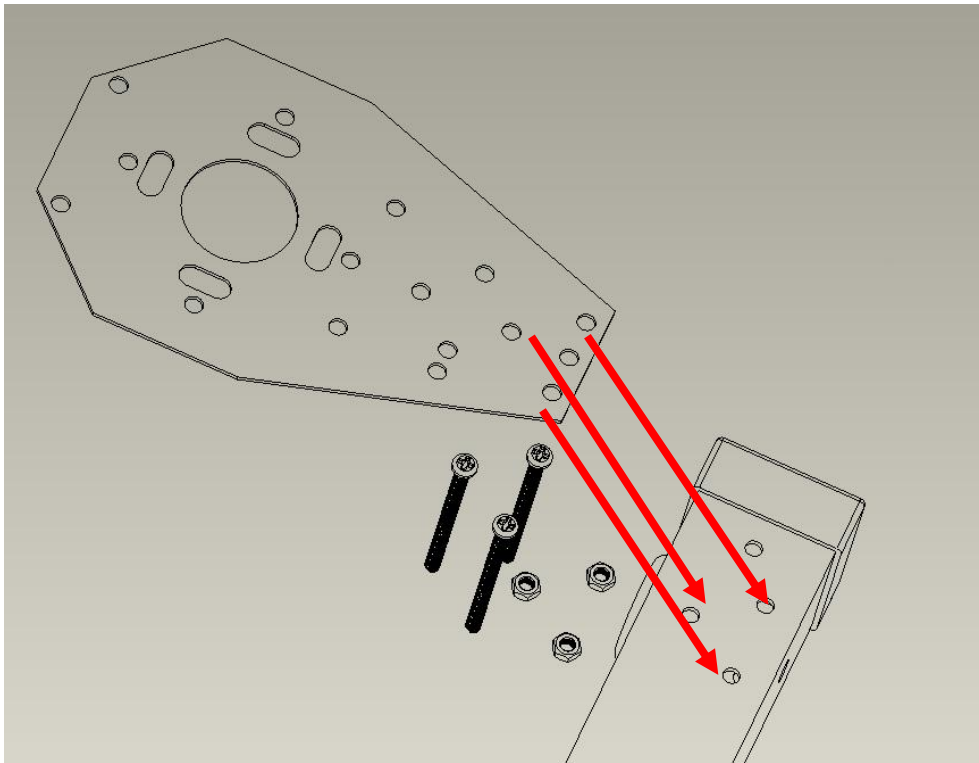
step 1.Take out the Phillips M6 screw\*4, and install the cross arm to the upper main pole position.(Different sensors have different installation orientations of the cross arm).



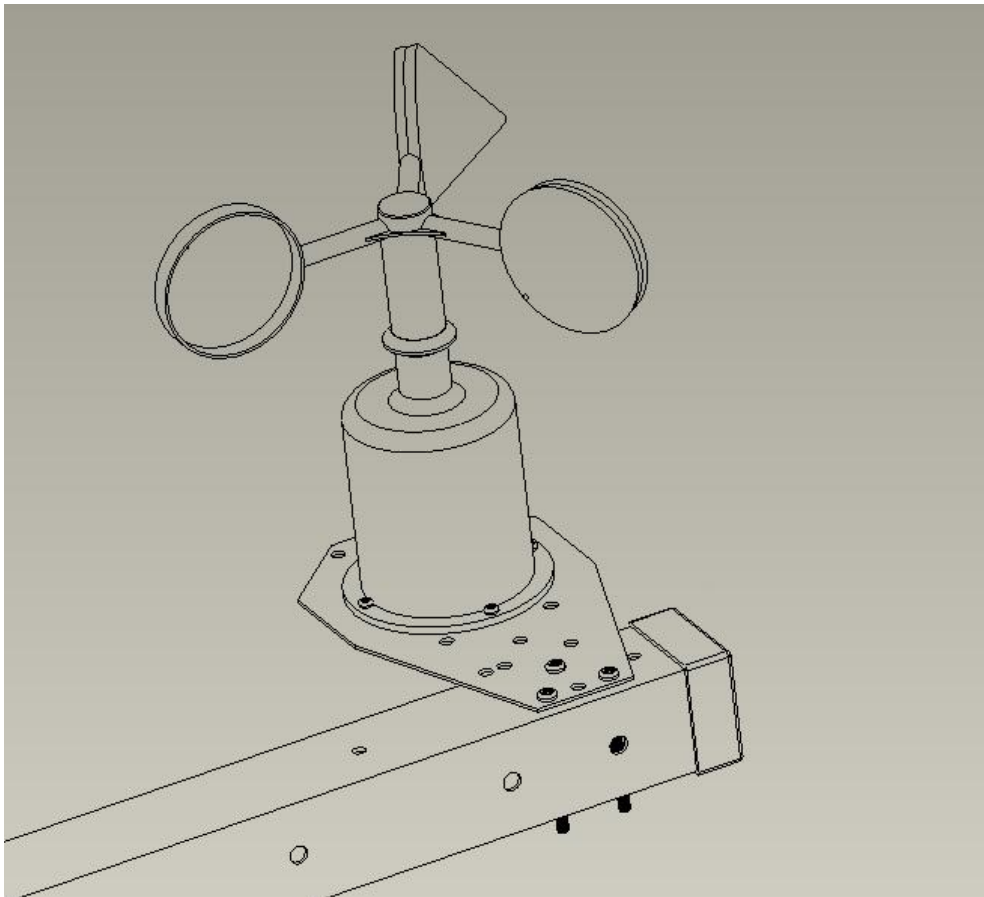
step 2.If you install CDG-10B, install it as shown in the photo,M6\*55-2pcs M6 Nut-2pcs.



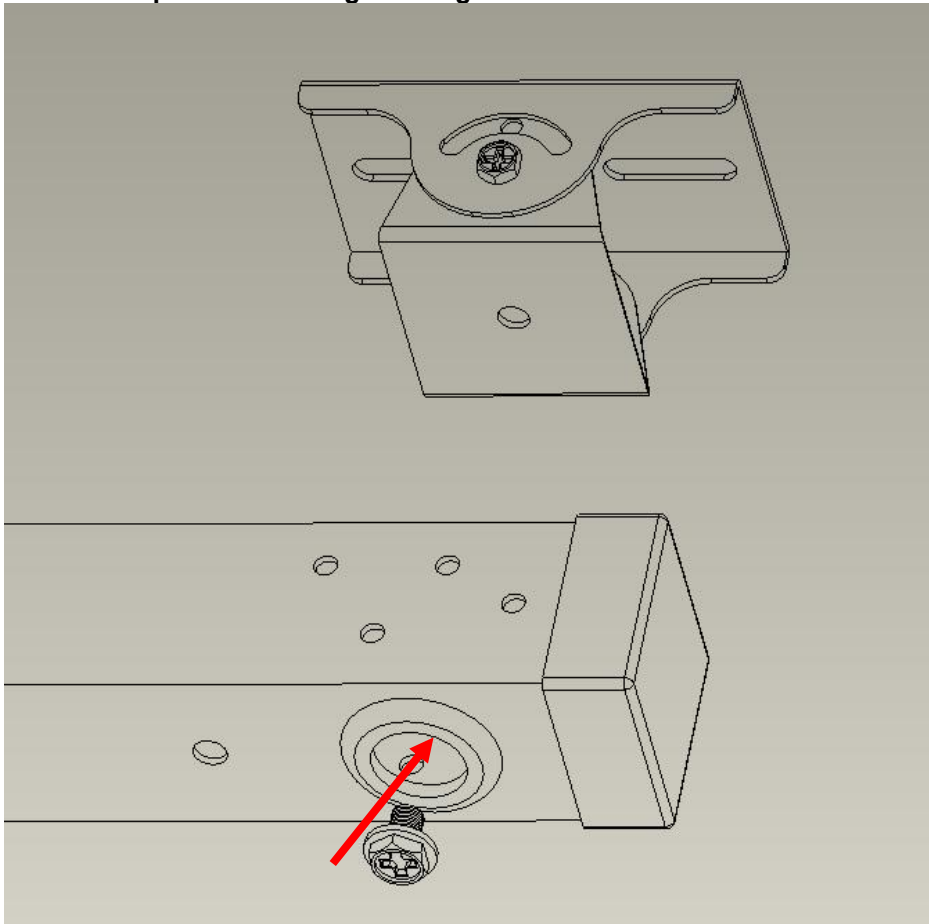
**step 3.If you install CDF-10A or CDF-11A, you need to install the small bracket first.  
M4\*50 -3pcs, M4 Nut-3pcs.**



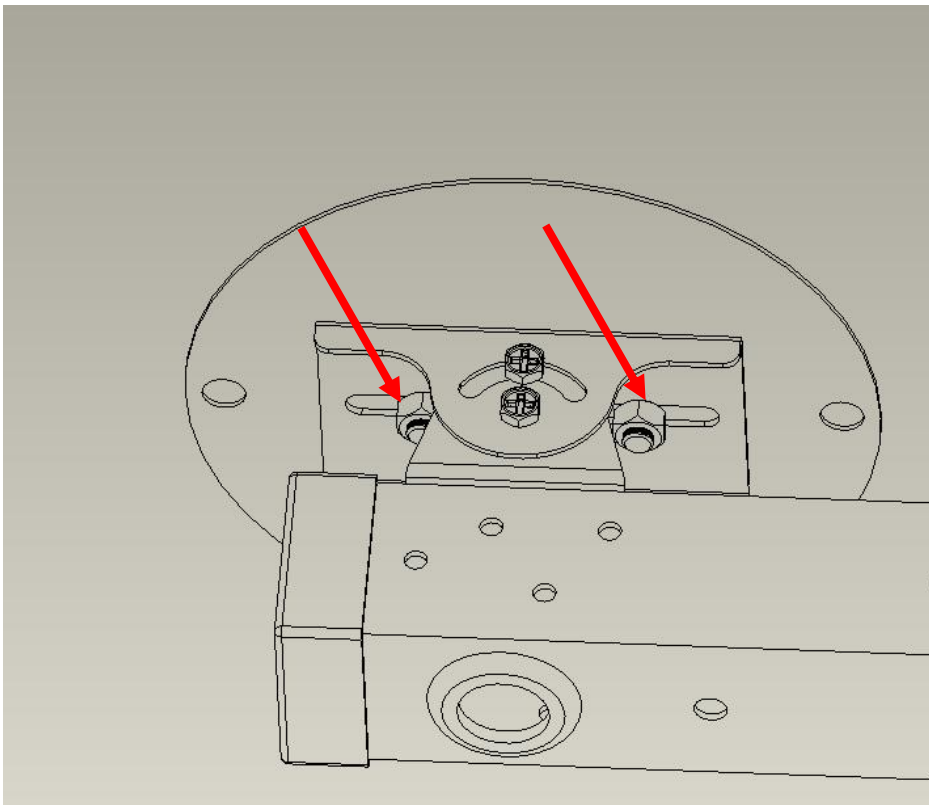
**step 4.Install CDF-10A or CDF-11A to the bracket.  
M3\*10 -4pcs, M3 Nut-4pcs.**



**step 5.To install CDG-11B to the bracket, you need to install the small bracket first.  
M6 Screw-1pcs.Pass through the big hole and lock the small bracket.**

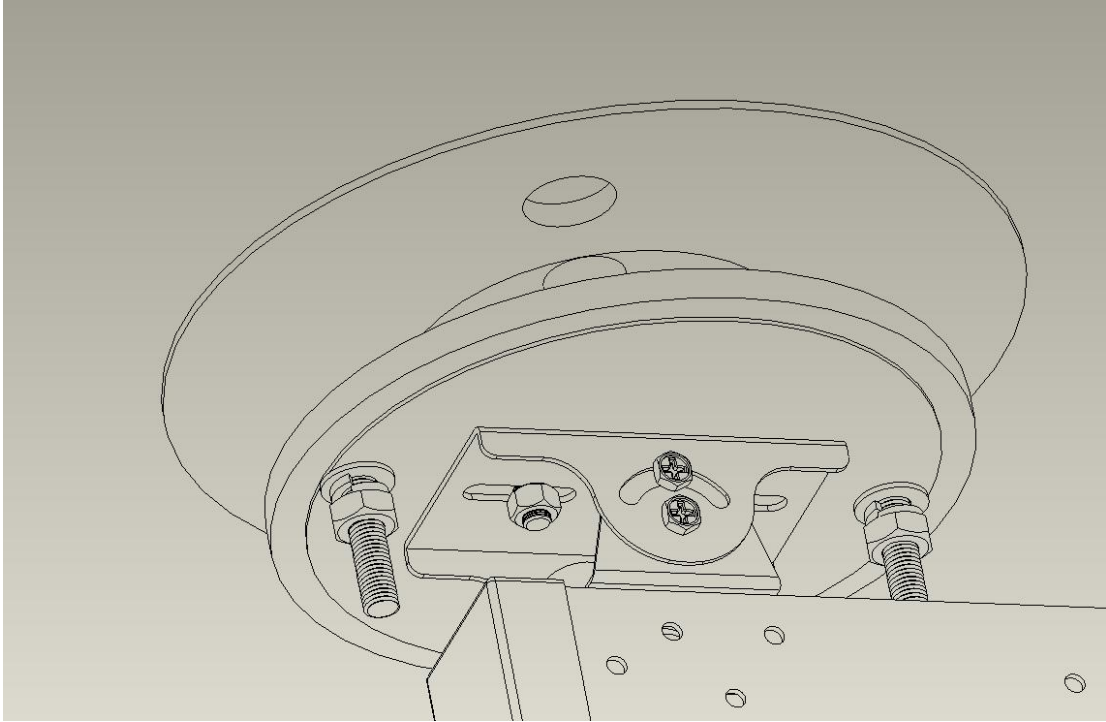


**step 6.Fix the disc plate on the bracket.M6\*10-2pcs M6 Nut-2pcs.**

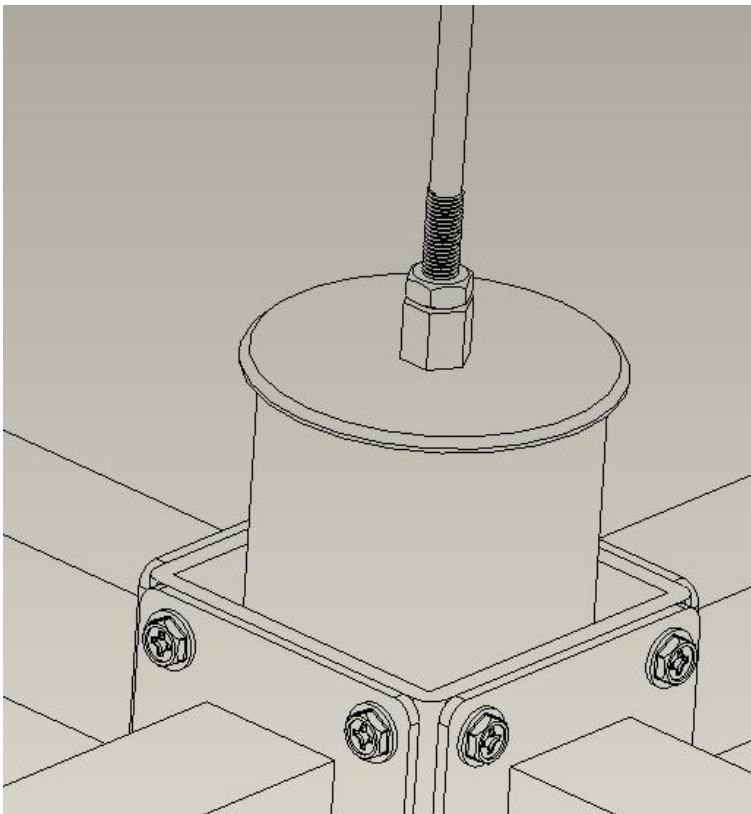




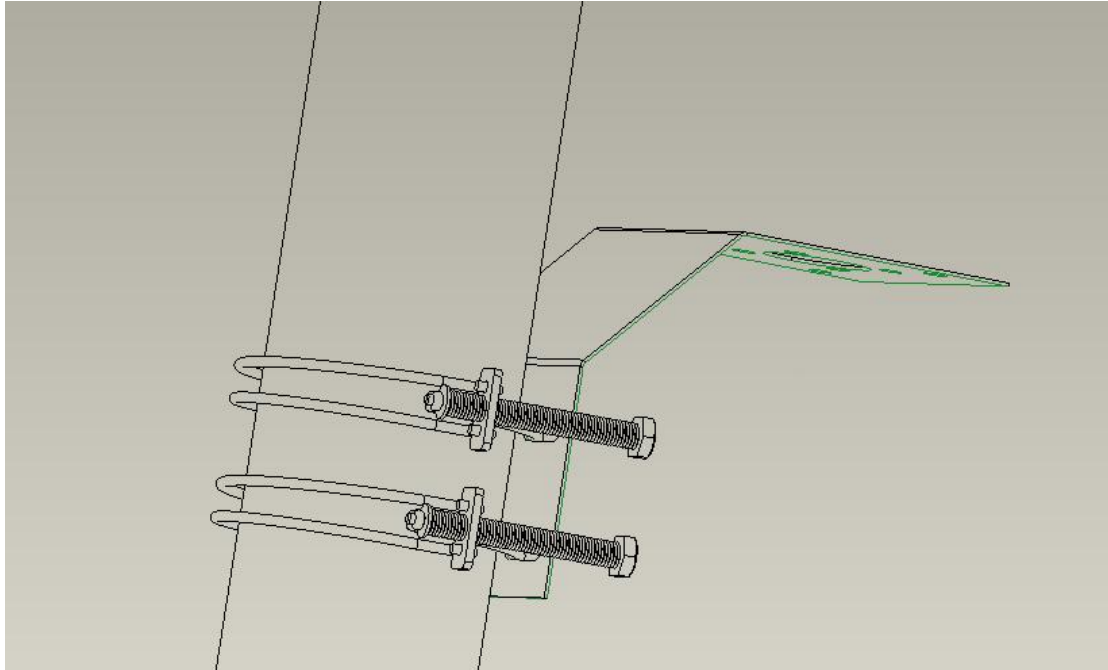
**step 7.Install CDG-11B to the disc bracket.M8\*40-2pcs,M8 flat gasket-2pcs, M8 spring washer-2pcs.**



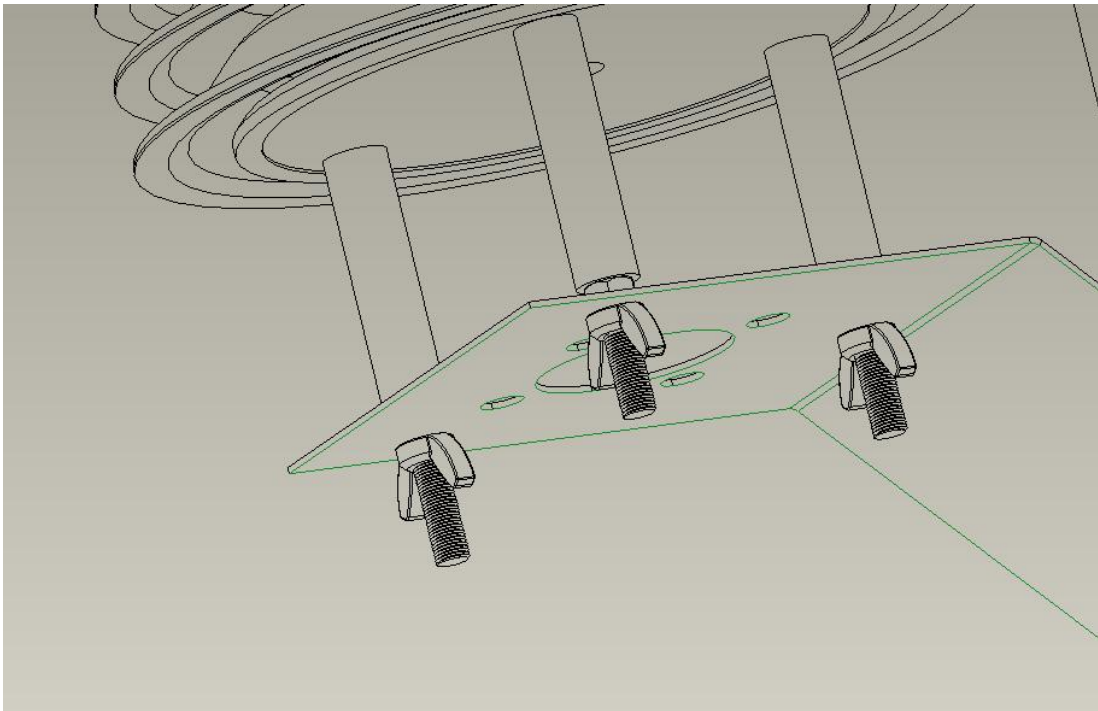
**step 8.Install lightning rod.**



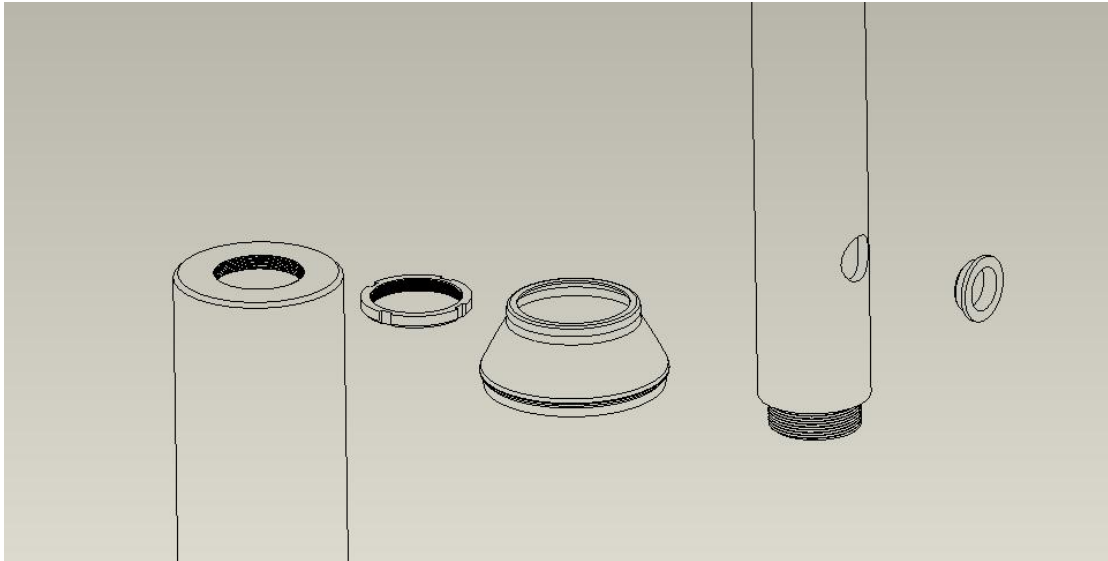
**step 9.Install the hoop and fix the louver bracket, as shown in the picture.**



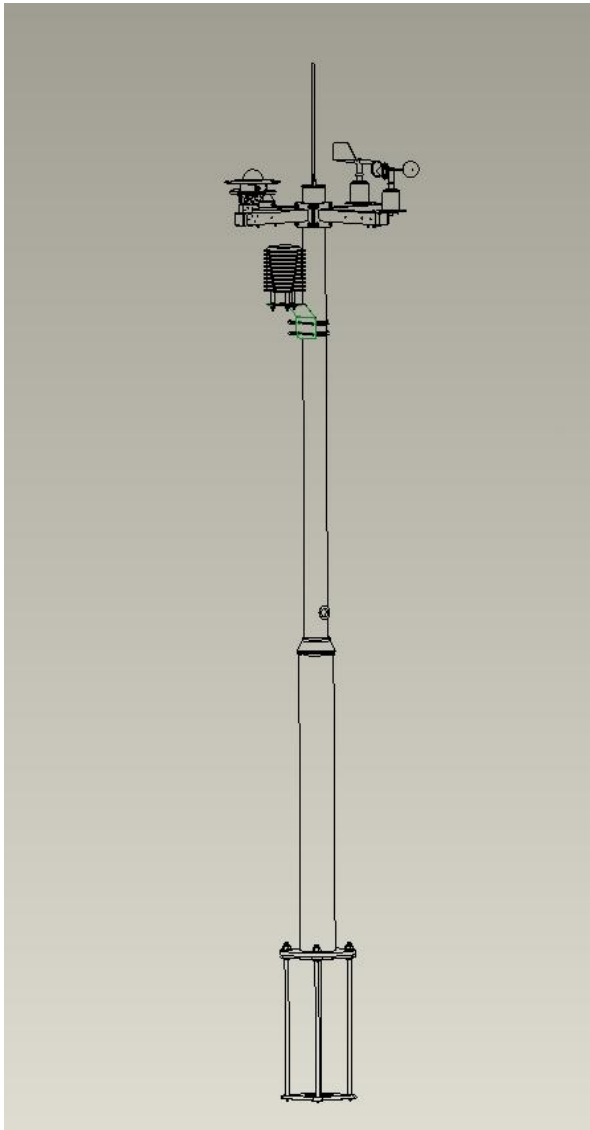
**step 10.Align the louver box with the bracket hole and fix it with screws.**



**3.4 Install the locking ring to the thread and put on the protective cover,then Install the upper main pole to the lower main pole.(Threaded connection)**

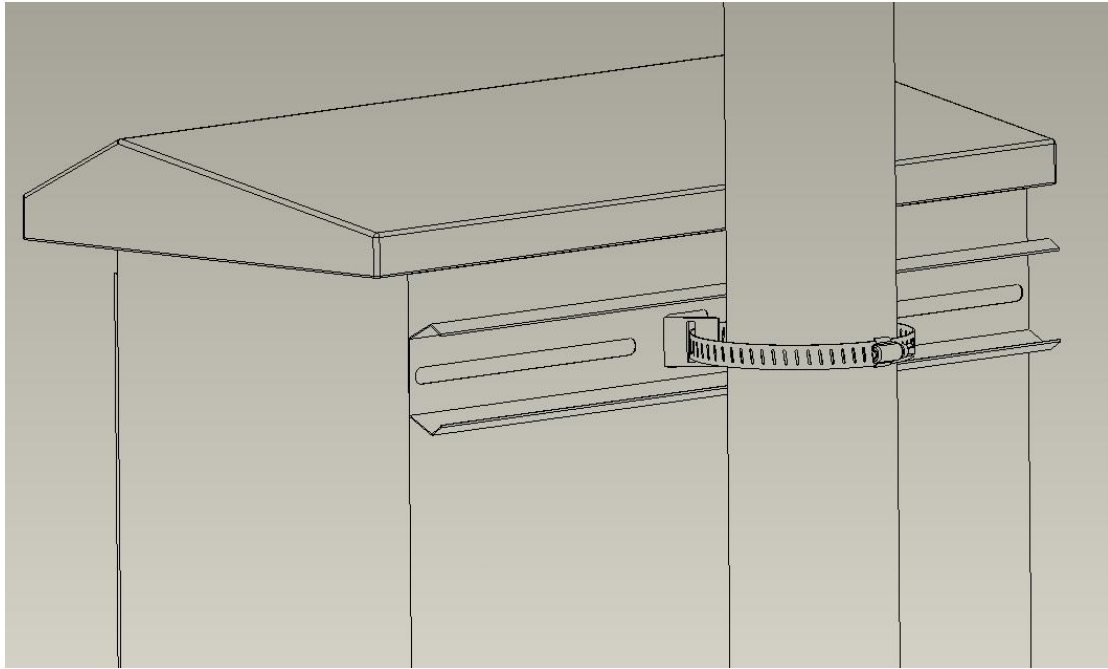


After installation, as shown in the picture below,If it matches the CODA recorder or solar energy, you need to continue to install it.

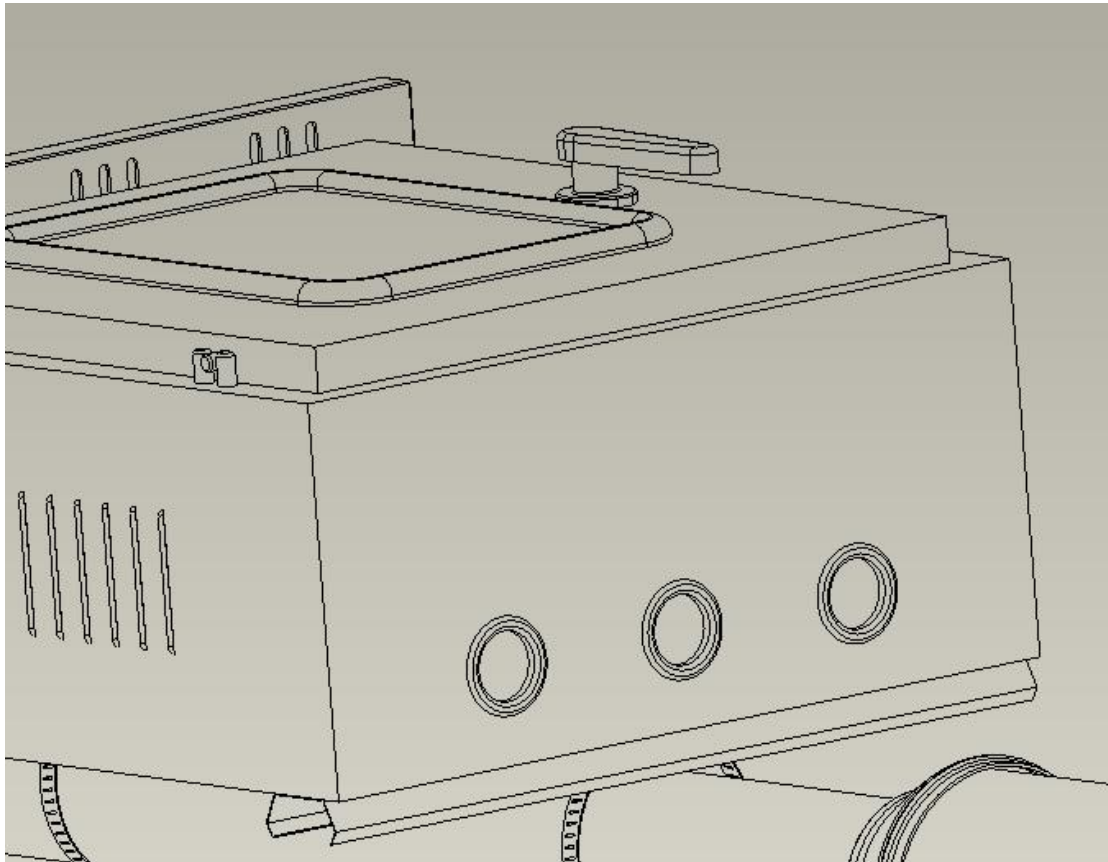


#### 4. CODA recorder installation.

4.1 Use the hoop to hold the recorder tightly on the support rod and lock it with the hoop. The recorder is between 1.2m-1.5m from the ground, customers can adjust the height according to their needs.



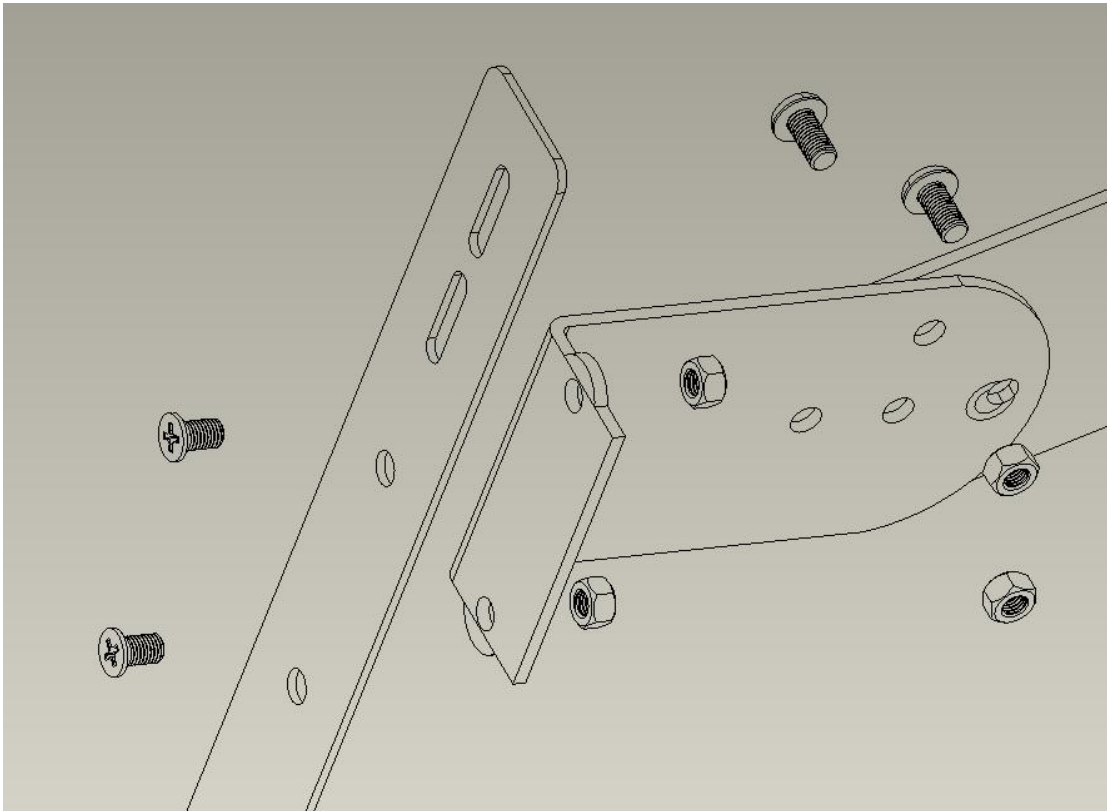
4.2 The sensor data line is connected to the recorder through the rubber plug at the bottom of the recorder.



**5. Solar bracket installation.**

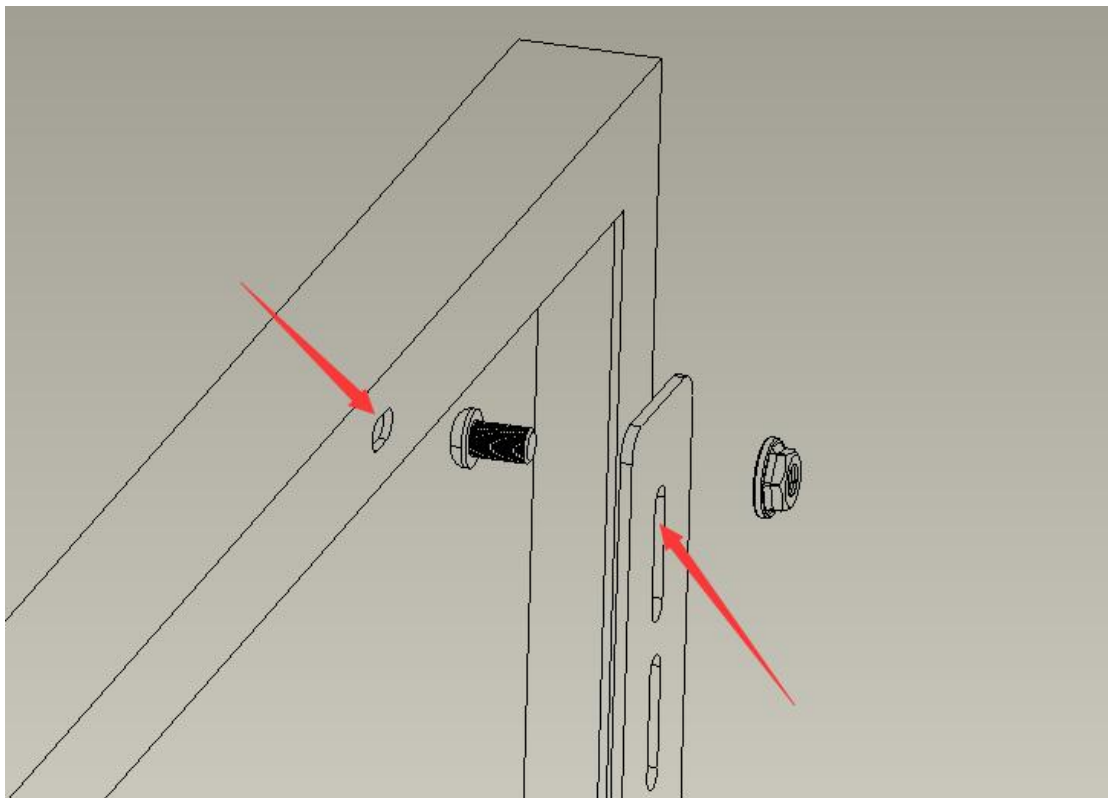
**5.1 Install the support plates on both sides first.**

**Flat head screw M6\*8-4pcs, Round head screw M6\*12-4pcs ,M6 Nut-8pcs**



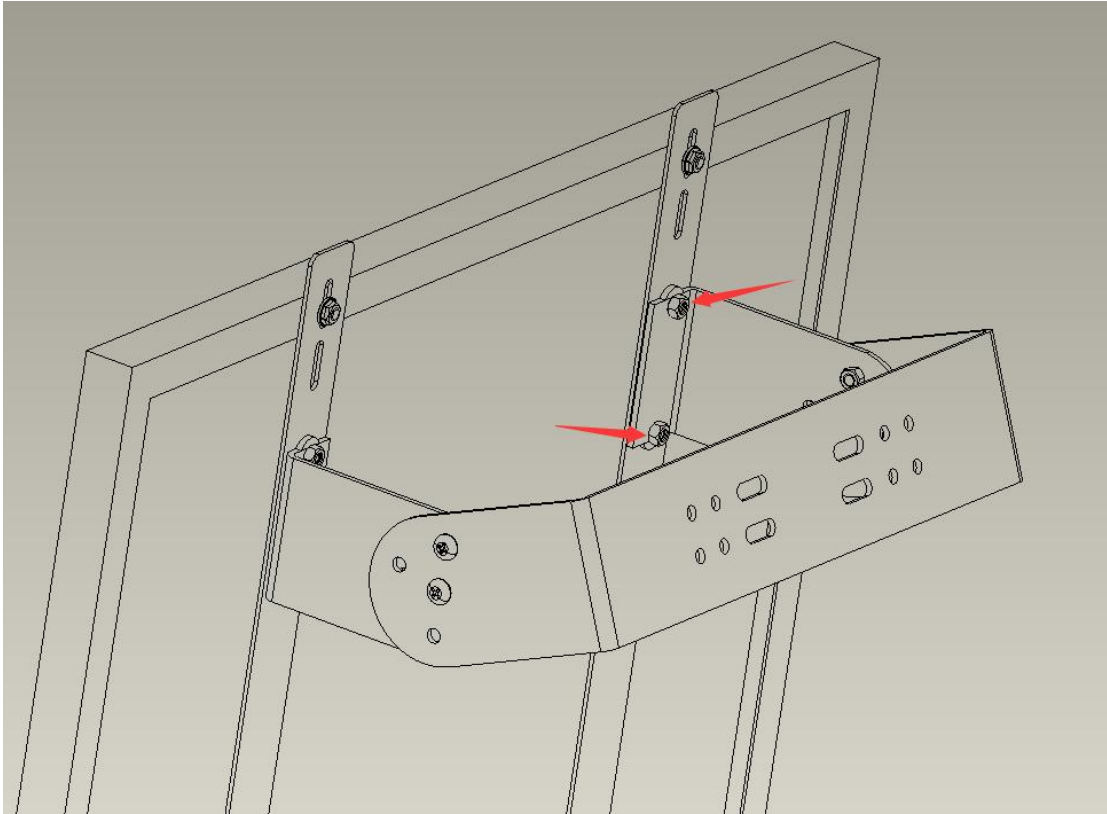
**5.2 Fix the supporting long board on the back of the solar energy.**

**Round head screw M6\*10-4pcs ,M6 Nut-4pcs**



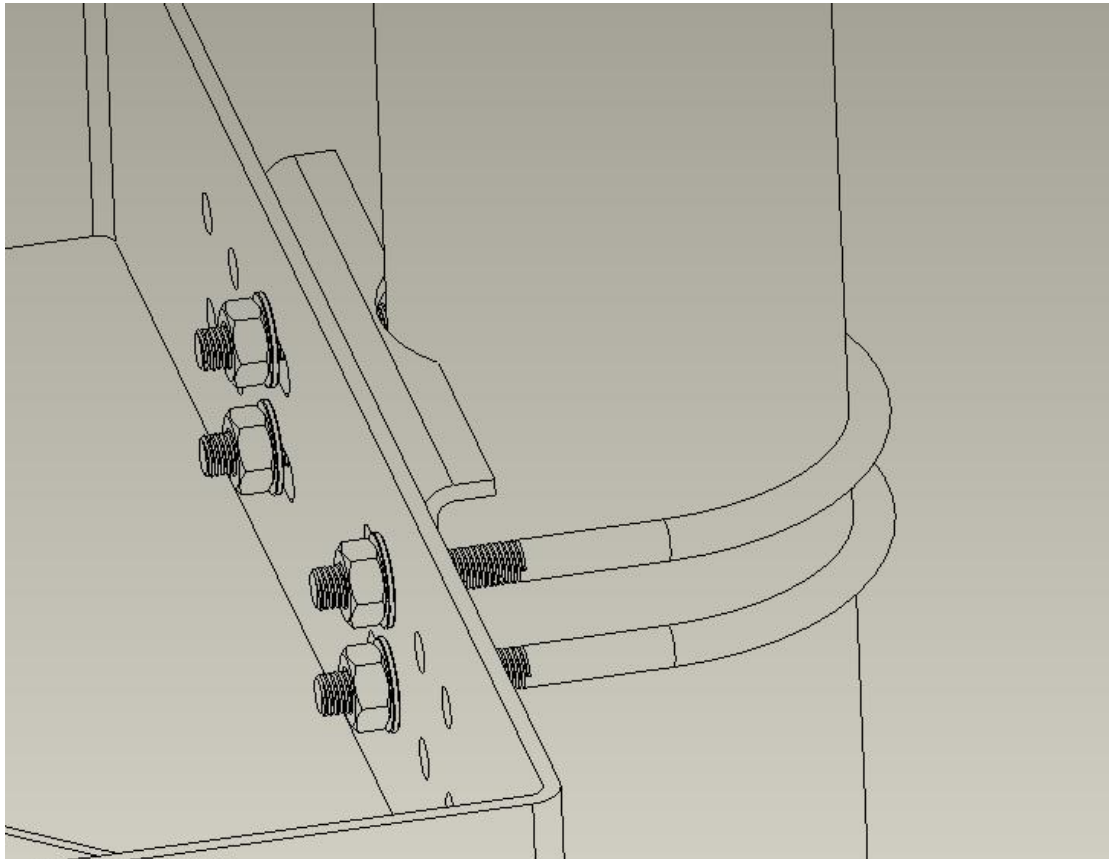
**5.3 Assemble the bracket to form a whole.**

**Flat head screw M6\*8-8pcs ,M6 Nut-8pcs**

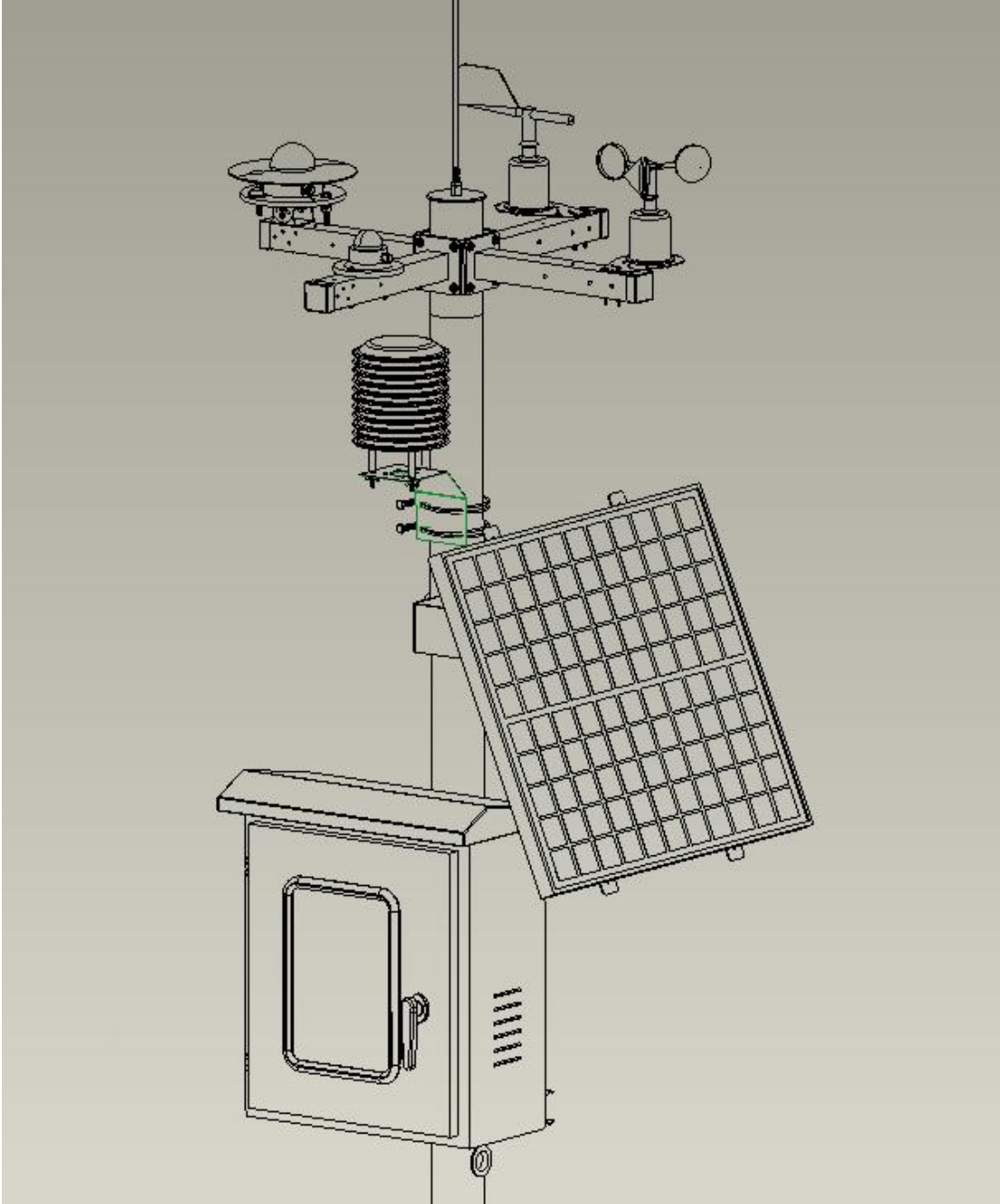


**5.4 Fix the solar panel on the bracket pole with U-shaped hoop. There should be no obstructions above the solar panel.**

**M8 Nut-4pcs ,M8 gasket-4pcs.**



6. You can use cable ties or other methods to fix the sensor cable on the pole. If it is a soil sensor or water quality sensor, connect directly to the recorder.



Specifications subject to change without notice. Version 1.0  
Copyright © 2015 Hunan Coda Electronic Tech Co.,Ltd